

RITZ Lounge

Design: Yasuhiro Shito



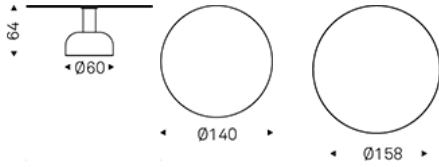
Product description

Table with base in titanium (GFM11) or bronze (GFM18) embossed lacquered steel. Marmi Alabastro (KM02), Supreme (KM03), matt Golden Calacatta (KM05), glossy Golden Calacatta (KM06), matt Portoro (KM07), glossy Portoro (KM08), glossy Sahara Noir (KM09), Makalu (KM11), Breccia (KM12), Colosseo (KM21), Andromeda (KM22), matt Invisible (KM24) or Luxor (KS23) ceramic top. Optional central swiveling tray Lazy Susan.

RITZ Lounge

Design: Yasuhiro Shito

Dimension

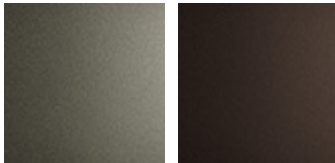


RITZ Lounge

Design: Yasuhiro Shito

Finishes: base

metal



GFM11 titanium embossed

GFM18 bronze embossed

Finishes: top

Marmi ceramic



KM02 Alabastro

KM03 Supreme

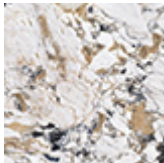
KM05 matt Golden Calacatta

KM06 glossy Golden Calacatta

KM07 matt Portoro

KM08 glossy Portoro

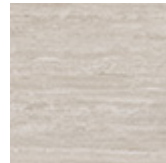
KM09 glossy Sahara Noir



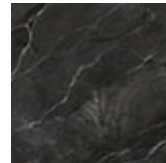
KM11 Makalu



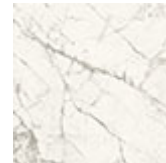
KM12 Breccia



KM21 Colosseo



KM22 Andromeda



KM24 matt Invisible

KS ceramic



KS23 Luxor